



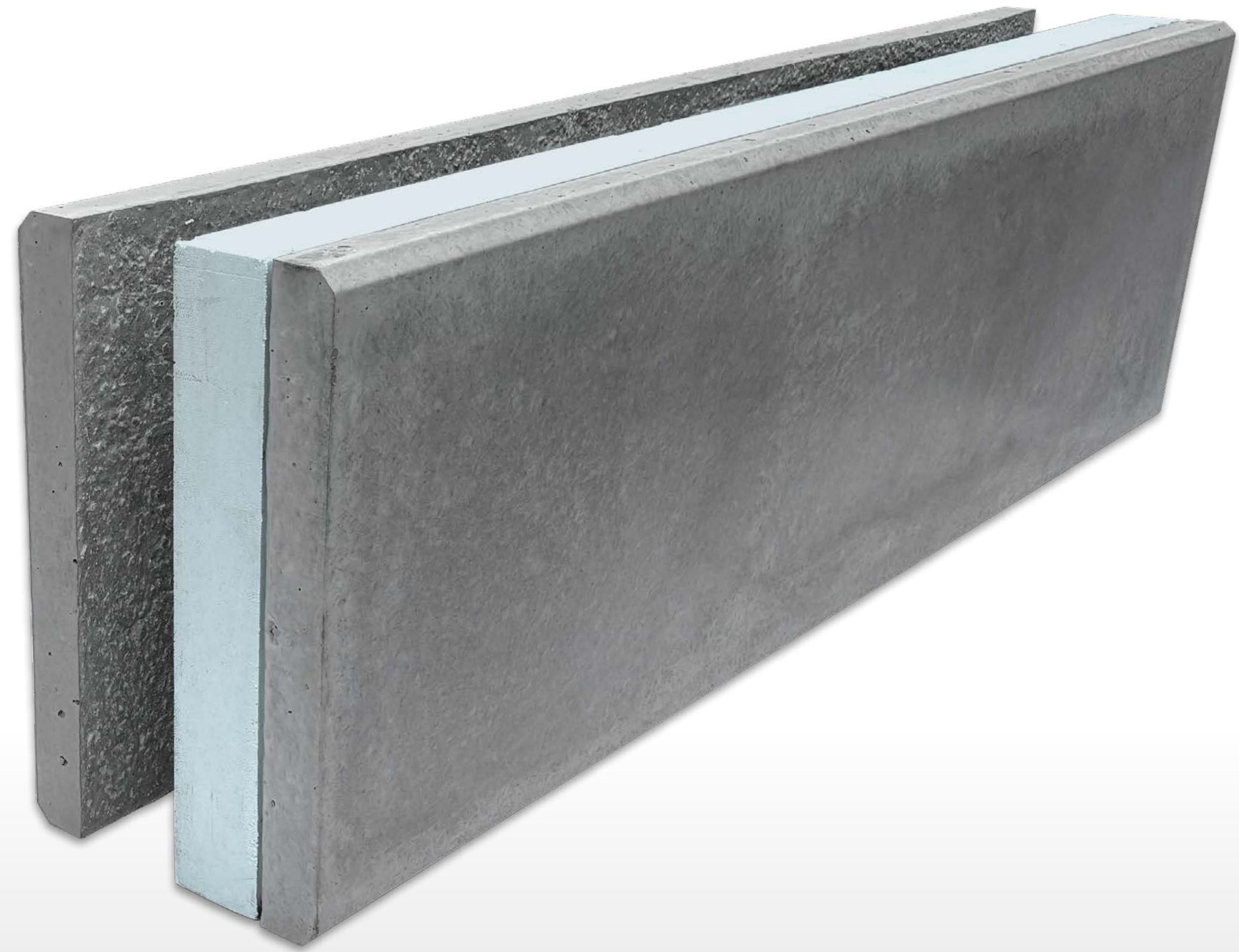
INNOVATIVE ECO ENERGY-EFFICIENT
STRUCTURAL CONCRETE WALL SYSTEM

A CONCRETE SOLUTION

A unique structural wall system that redefines industry standards with its quick installation, durability, and unprecedented efficiency.



**RAPID
BLOC**





One of the industry's most **DURABLE** and **FASTEST** to assemble wall systems.



**RAPID
BLOC**



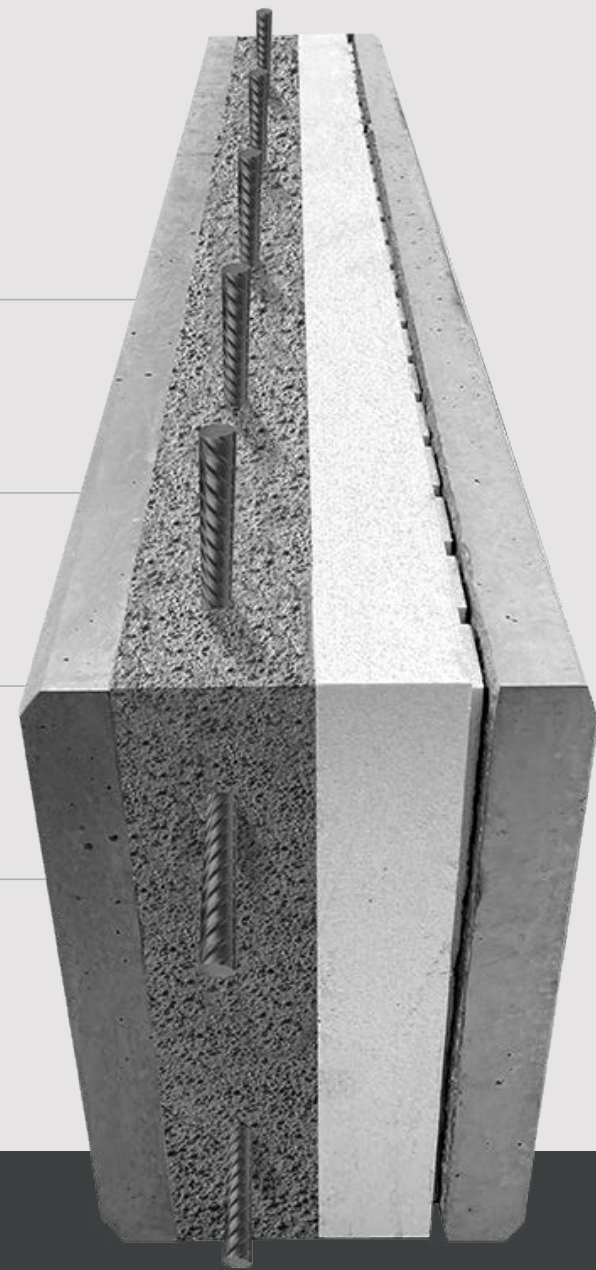
A versatile solution for an addition or an expansion.

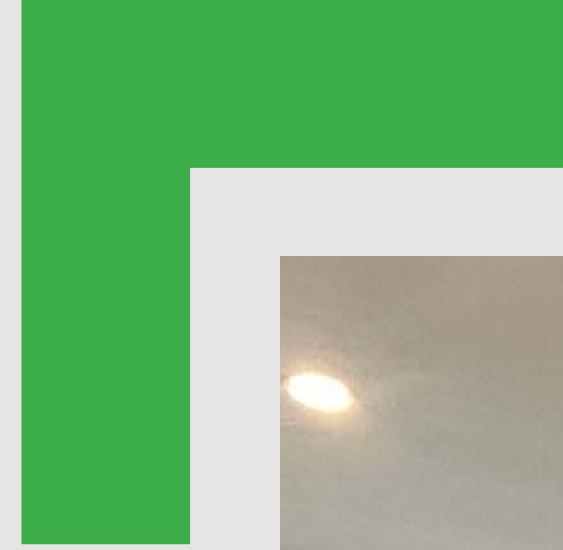
Thanks to its fire resistance, Rapid Bloc wall system reduces exposing building faces.



A complete 4 in 1 system

- 1 Interior finish
- 2 Structure
- 3 Insulation
- 4 Exterior finish





**Requires no
additional interior
or exterior finish.**





**What if your walls
lasted hundreds
of years?**

**UNIQUE
DURABILITY**



INNOVATIONS AND KEY BENEFITS

**RAPID
BL****OC**

INNOVATIVE ECO ENERGY-EFFICIENT
STRUCTURAL CONCRETE WALL SYSTEM



DURABILITY

Resistant to heavy machinery impacts and all chemicals, including calcium, etc.



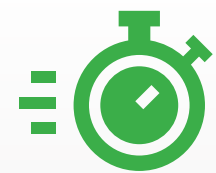
OPTIMAL STRENGTH

Resistance to strong winds and extreme weather conditions.



ECO-FRIENDLY

Installation generating almost "zero waste".



INSTALLATION SPEED

Construction up to 50% faster than traditional systems.



REDUCED MANPOWER REQUIREMENTS

Perfect for offsetting the current labour shortage.



STRUCTURAL WALLS

Anchors can be installed on all wall system surfaces.



EXCEPTIONAL FIRE RESISTANCE

Non-combustible construction. Reduces exposed building faces.



ENERGY EFFICIENCY

Superior insulation with an effective R-value ranging from 24 to 33.



ENERGY SAVINGS

Building with high thermal mass storage capacity.

BUILDING ENVELOPE

**RAPID
BLOC**

INNOVATIVE ECO ENERGY-EFFICIENT
STRUCTURAL CONCRETE WALL SYSTEM

SIMPLIFIED SYSTEM

- 1** Prefabricated block delivered quickly to the site.
- 2** Easy installation for rapid setup.



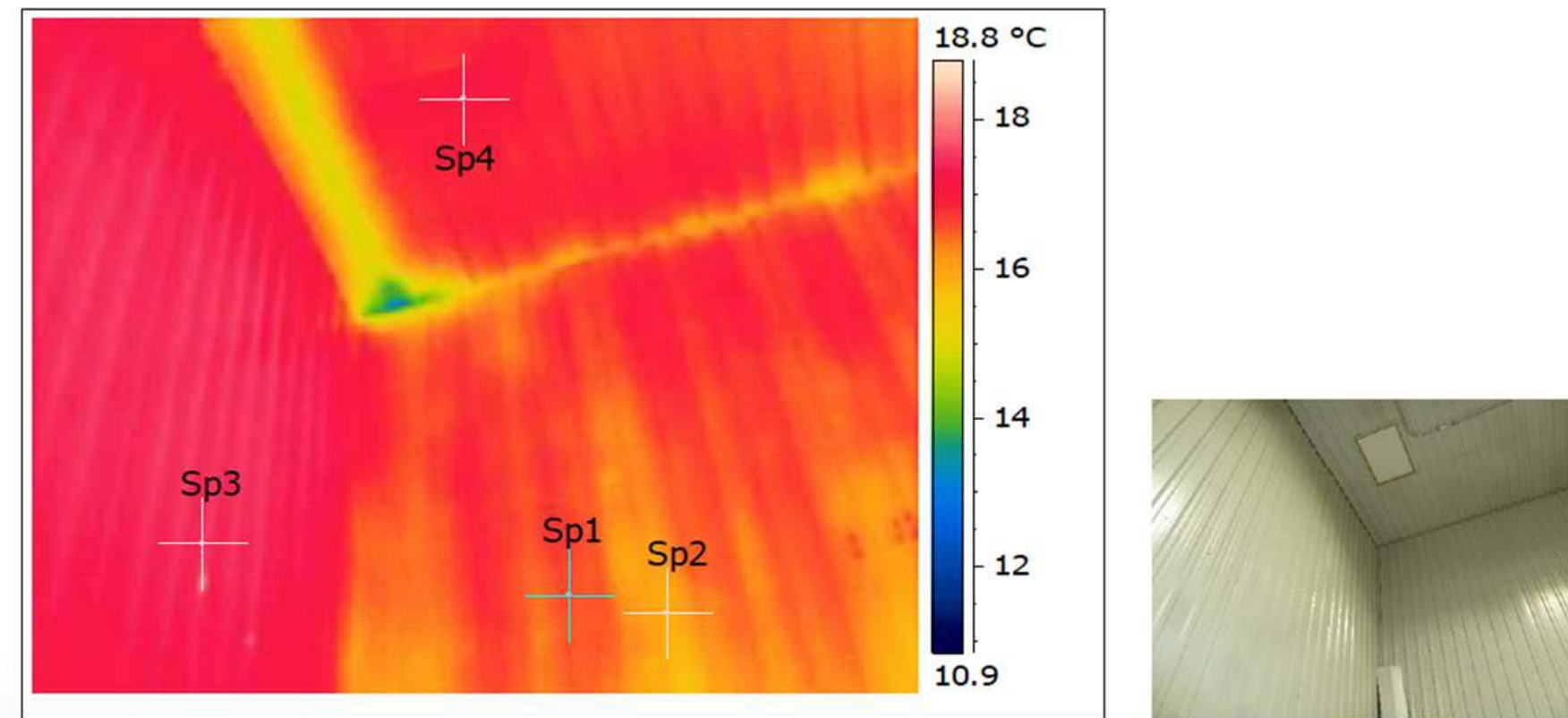
SIMPLIFIED SYSTEM

- 3 Significant time savings on-site.
- 4 Nearly zero waste construction.

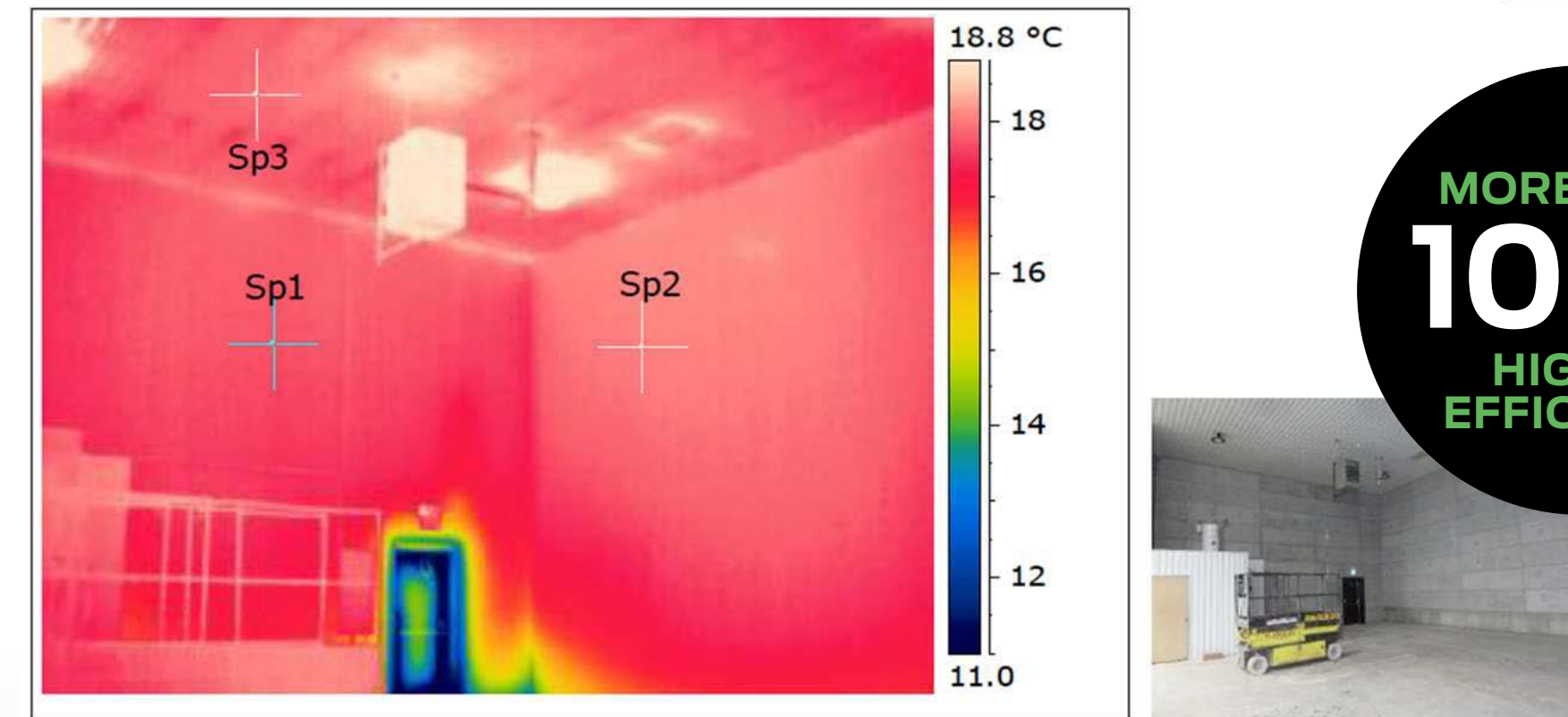


OPTIMAL INSULATION AND AIRTIGHTNESS OF THE BUILDING ENVELOPE.

THERMOGRAPHY DEMONSTRATING THE EFFECTIVENESS OF THE RAPID BLOC SYSTEM.



CONVENTIONAL WOOD-STEEL BUILDING



RAPID BLOC CONCRETE BUILDING

MORE THAN
10%
HIGHER
EFFICIENCY

WALL PROPERTIES

**RAPID
BLOC**

INNOVATIVE ECO ENERGY-EFFICIENT
STRUCTURAL CONCRETE WALL SYSTEM

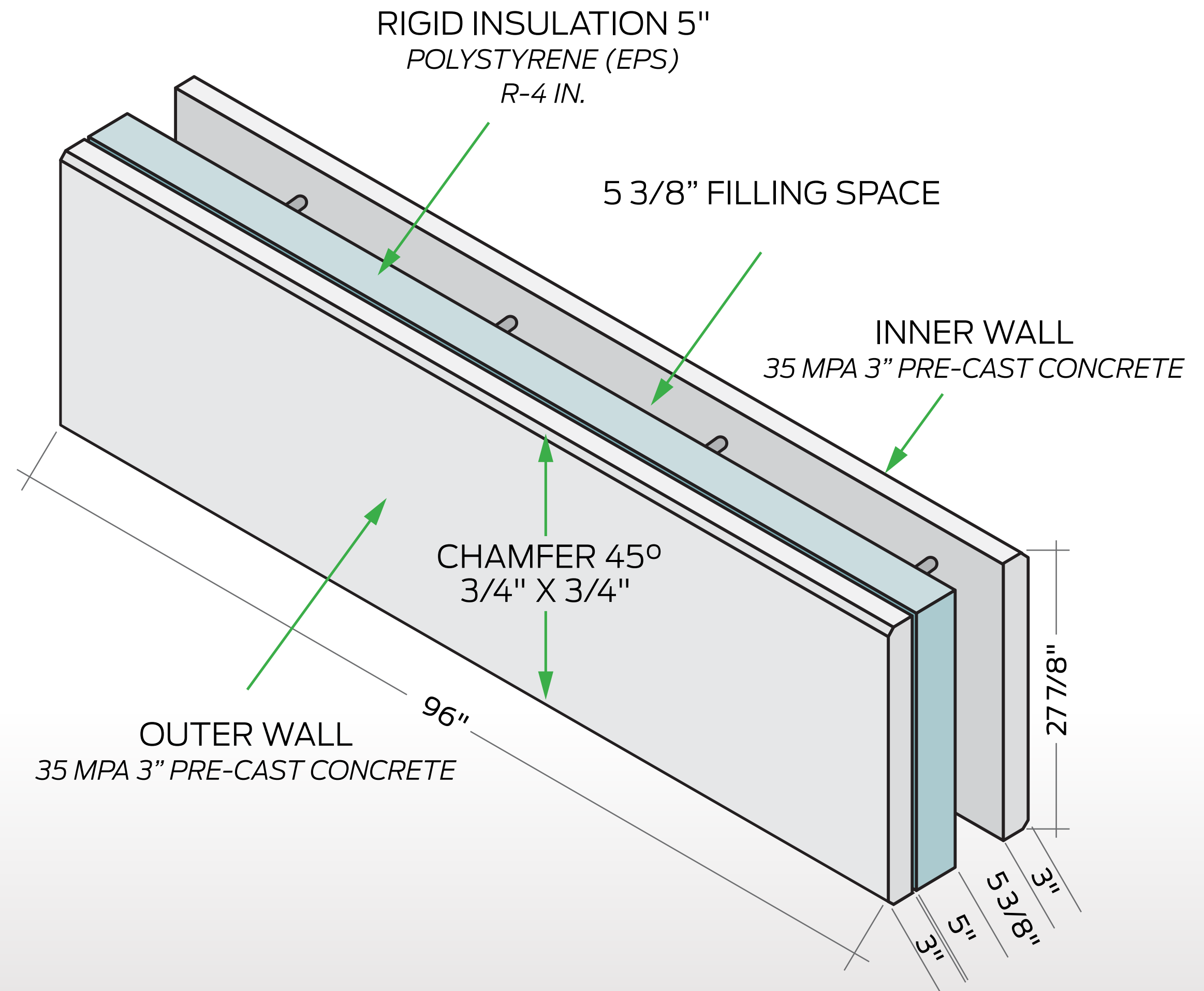
TECHNICAL SPECIFICATIONS

RAPID BLOC STANDARD

Width: 96"

Height: 27 7/8"

Thickness: 16 3/8"



DIMENSIONS

Design flexibility for custom projects.

21-3/8"

**SUPER
RAPID BLOC**

**+ OR -
R33**
TOTAL
EFFECTIVE
R-value



16-3/8"


**RAPID BLOC
STANDARD**

**+ OR -
R24**
TOTAL
EFFECTIVE
R-value

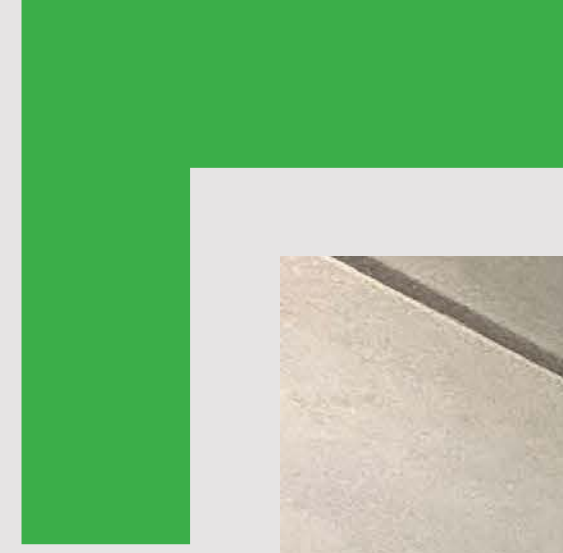


11-7/8"

**RAPID BLOC
NON-INSULATED**



AVAILABLE IN ALL SIZES: **48"**, **96"**, OR **CUSTOM-MADE.**



DESIGN

The concrete interior finish can be integrated to any architectural style.

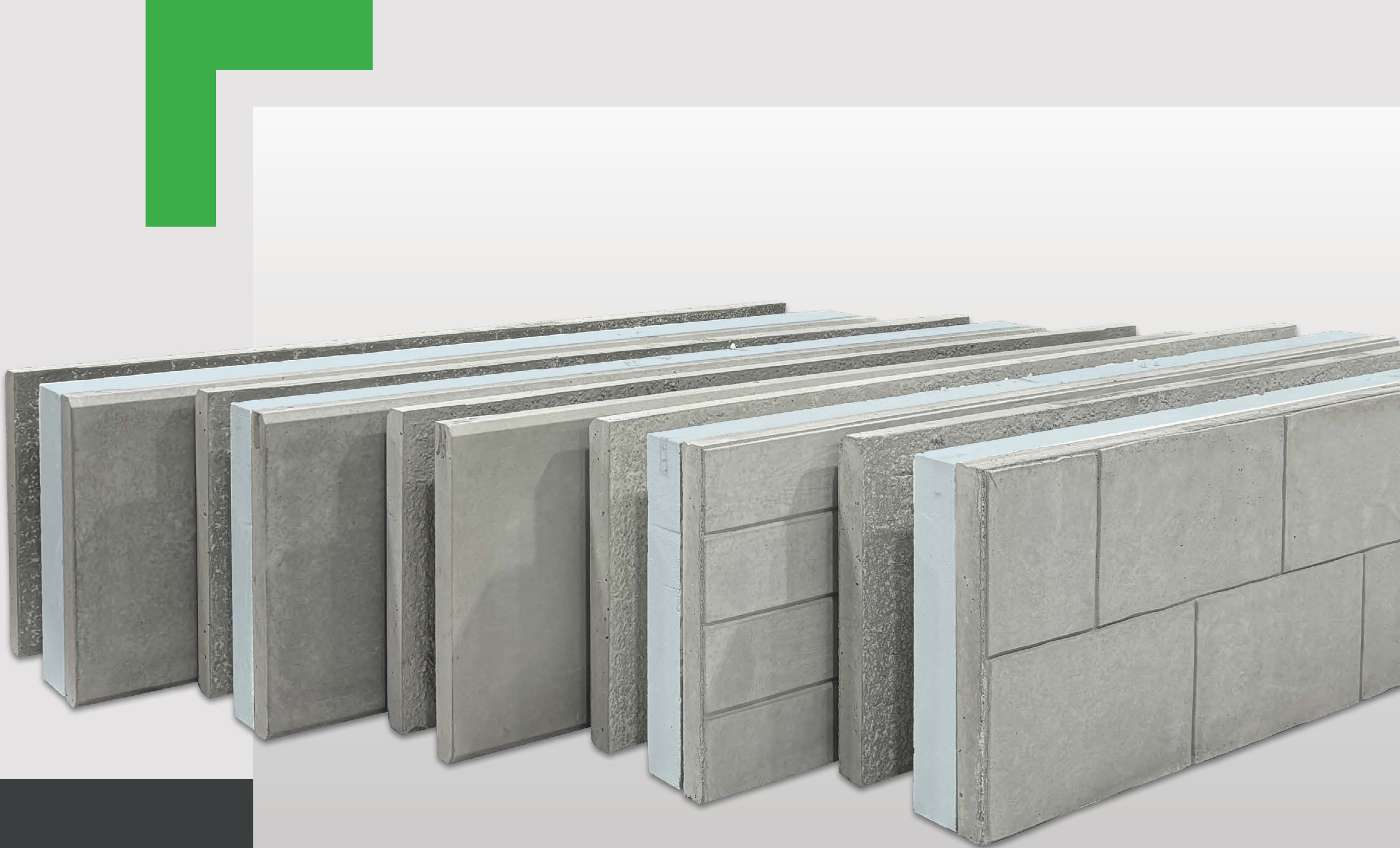


FINISHES

A wide range of finishes to suit all architectural styles.

PATTERNS

DIFFERENT FINISHES AVAILABLE



TYPE OF FINISH



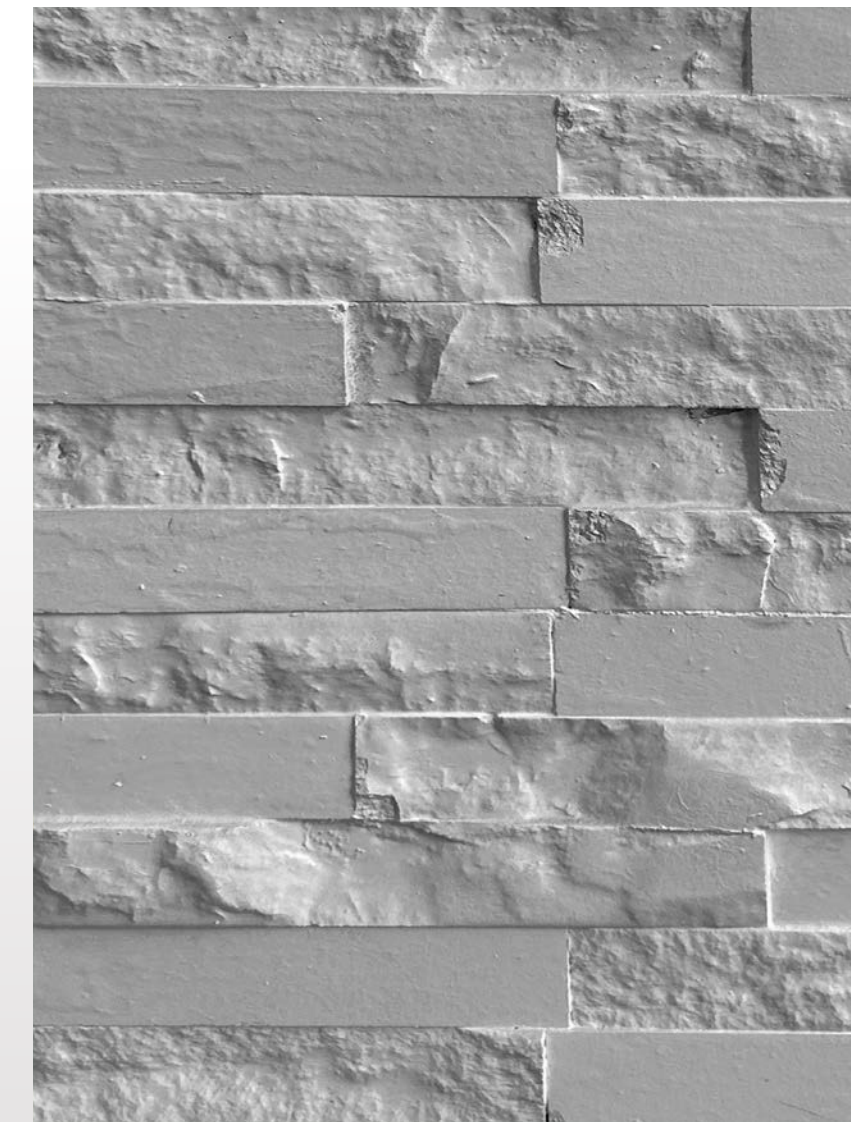
Smooth finish



Wood finish

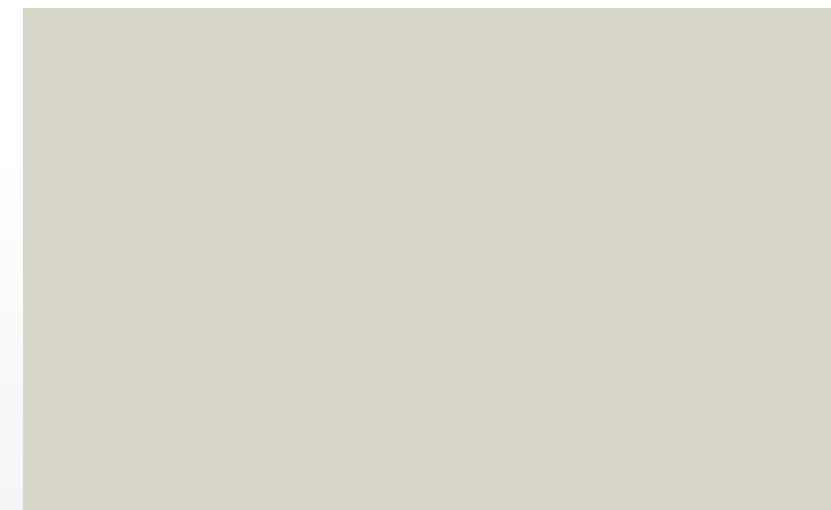
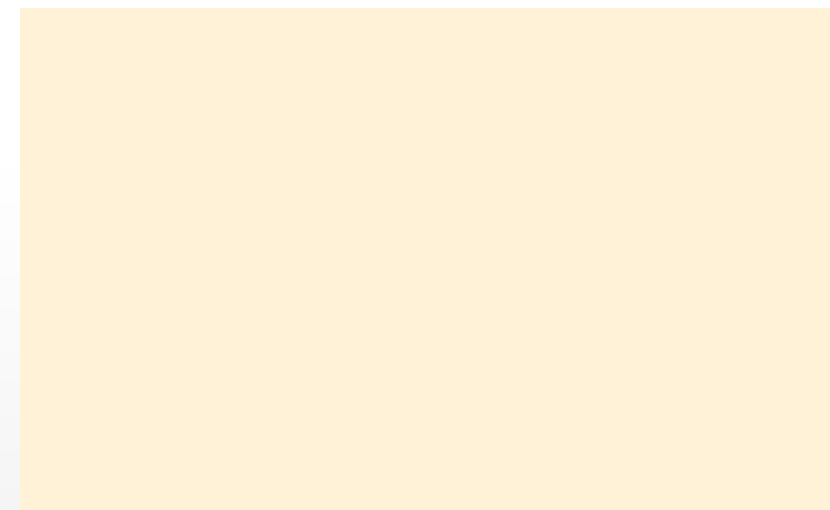


Stone finish



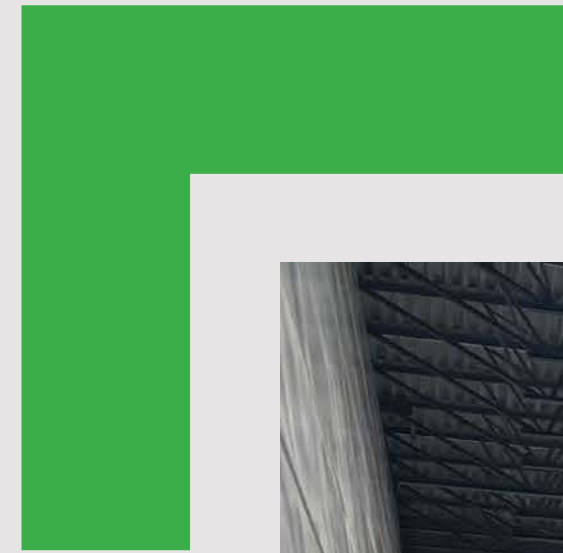
Brick finish

AN ENDLESS CHOICE OF COLORS



SMOOTH INTERIOR WALL FINISH, WITH NO APPARENT FRAMING COMPONENTS.

No dust buildup on the structure,
unlike conventional systems.





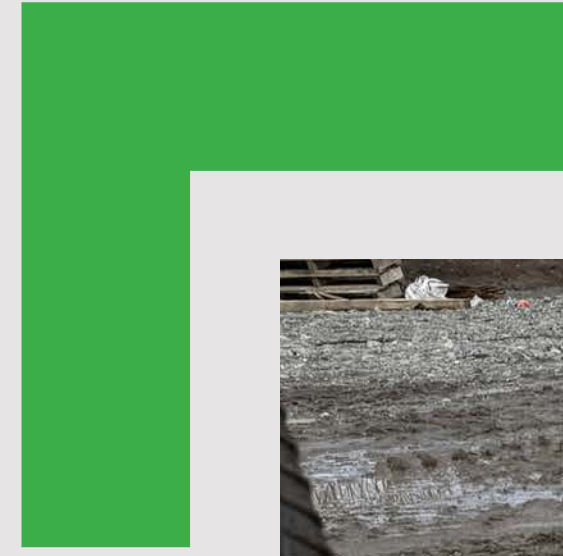
**100% OF
INTERIOR WALLS
ALLOW FIXINGS
WHEREVER YOU
NEED THEM.**



FOUNDATIONS

**RAPID
BLOC**

INNOVATIVE ECO ENERGY-EFFICIENT
STRUCTURAL CONCRETE WALL SYSTEM



**NO THERMAL
BRIDGING, WITH
INTEGRATED
INSULATION, AND
REQUIRES NO
EXTERIOR FINISH.**



TARGET MARKETS

**RAPID
BLOC**

INNOVATIVE ECO ENERGY-EFFICIENT
STRUCTURAL CONCRETE WALL SYSTEM



LARGE SURFACES

INDUSTRIAL, COMMERCIAL, INSTITUTIONAL



**RAPID
BLOC**

WHAT ABOUT ESG

**RAPID
BLOC**

INNOVATIVE ECO ENERGY-EFFICIENT
STRUCTURAL CONCRETE WALL SYSTEM

E

ENVIRONMENTAL

Energy-efficient product

Stores thermal mass

Generates almost zero construction waste

S

SOCIAL

Comfortable building for employees

Cool in summer and warm in winter

Smooth surface and light-colored

G

GOVERNANCE

Long term durable and cost-effective building

Energy savings

TRAINING AND DOCUMENTATION

**RAPID
BLOC**

INNOVATIVE ECO ENERGY-EFFICIENT
STRUCTURAL CONCRETE WALL SYSTEM

**Training,
documentation,
and CAD files
available.**



INSTALLATION

CONCRETE POURING

PRICE LIST



INNOVATIVE ECO ENERGY-EFFICIENT
STRUCTURAL CONCRETE WALL SYSTEM

PRICE PER SQ. FT. - WALL SURFACE

RAPID BLOC STANDARD

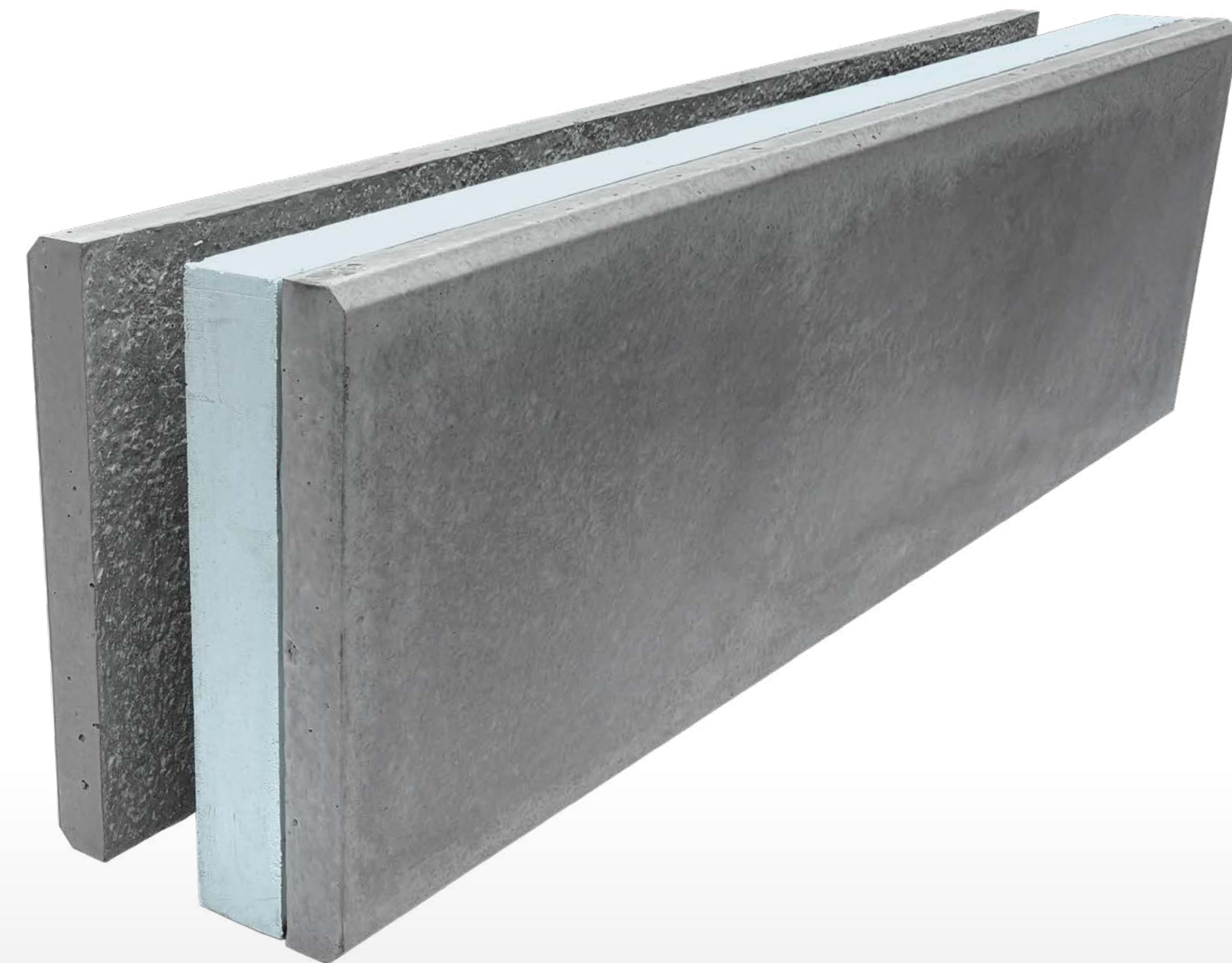
- 5" insulation thickness
- Block thickness 16-3/8"

1 Rapid Bloc Standard 96" x 28" = 18.64 sq.ft.

Block price 18.64 sq.ft. x \$19.50 = \$365.00 + shipping

For a total average price of **\$49.50 per sq.ft.* / covering +TX**

* Including block installation, reinforcement, 5-1/2" thick concrete, pumping, structural framing for doors and windows, as well as lifting equipment and labor, an additional cost of approximately \$30/sq. ft. is required.



PRICE PER SQ. FT. - WALL SURFACE

SUPER RAPID BLOC

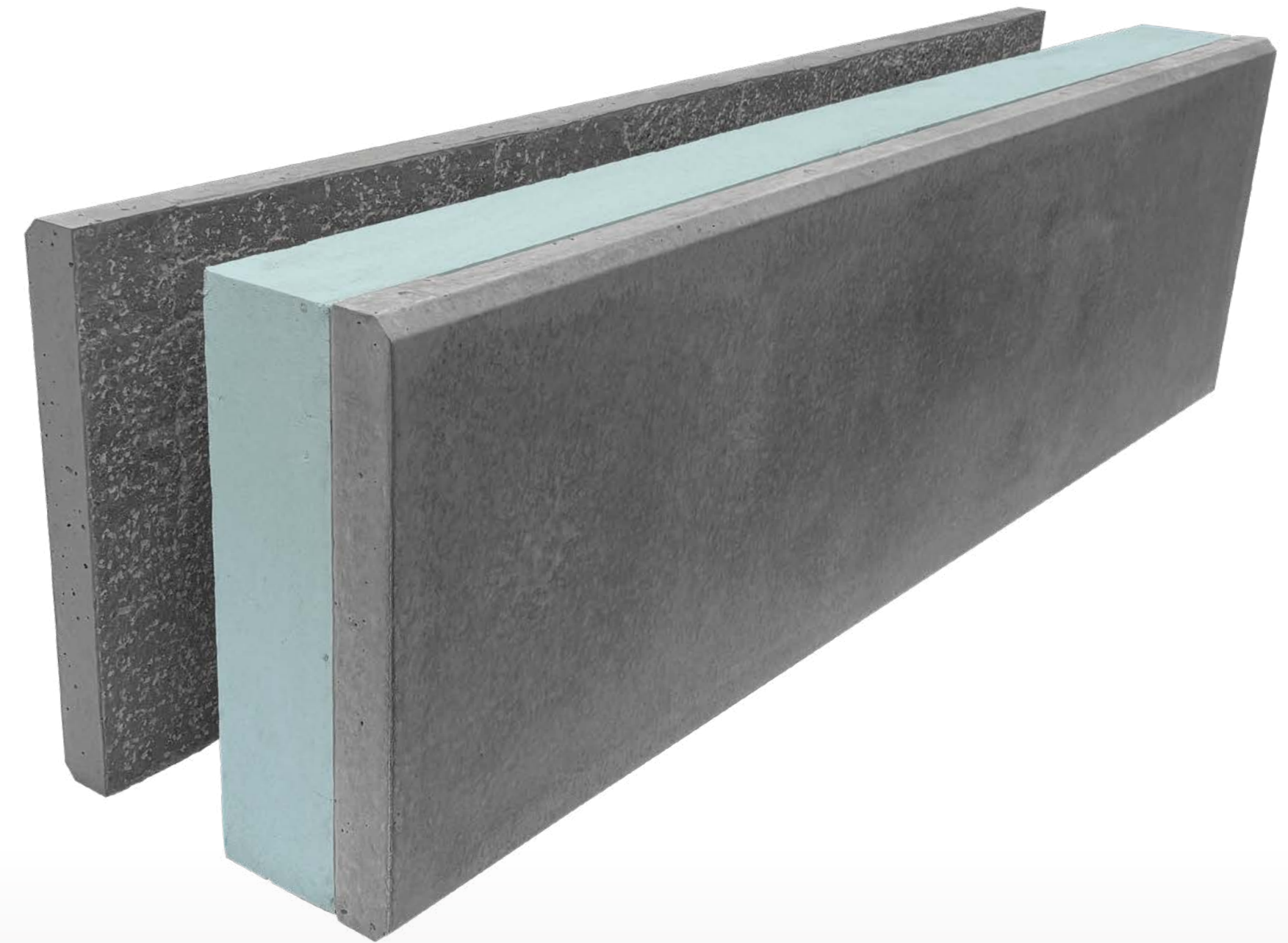
- 7-1/2" insulation thickness
- Block thickness 21-7/8"

1 Rapid Bloc Standard 96" x 28" = 18.64 sq.ft.

Block price 18.64 sq.ft. x \$22.26 = \$415.00 + shipping

For a total average price of **\$59.26 per sq.ft.* / covering +TX**

* Including block installation, reinforcement, 8" thick concrete, pumping, structural framing for doors and windows, as well as lifting equipment and labor, an additional cost of approximately \$37/sq. ft. is required.



APPROXIMATE PRICE PER SQ. FT. OF BUILDING FOOTPRINT

BUILDING 21' TO 24' CLEAR HEIGHT

Approximate price per sq. ft. of
building turnkey base building
(without office layout).



RAPID BLOC STANDARD

SURFACE	PRICE (sq.ft.)
6 000 TO 10 000 sq.ft.	\$175.00
10 000 TO 15 000 sq.ft.	\$160.00
15 000 TO 30 000 sq.ft.	\$145.00
30 000 TO 100 000 sq.ft.	\$120.00

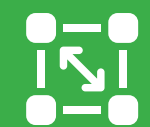
* Prices subject to change. In Rapid Bloc standard
according to project already completed.

PROJECTS

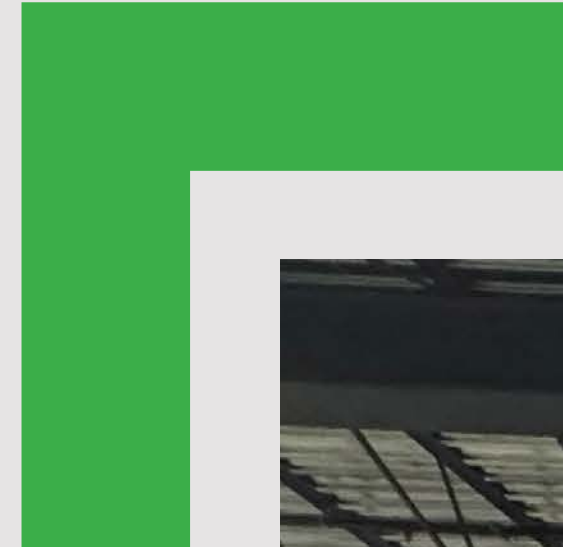
**RAPID
BLOC**

INNOVATIVE ECO ENERGY-EFFICIENT
STRUCTURAL CONCRETE WALL SYSTEM

BOURASSA PROJECT



100 000 SQ.FT.



**RAPID
BLOC**

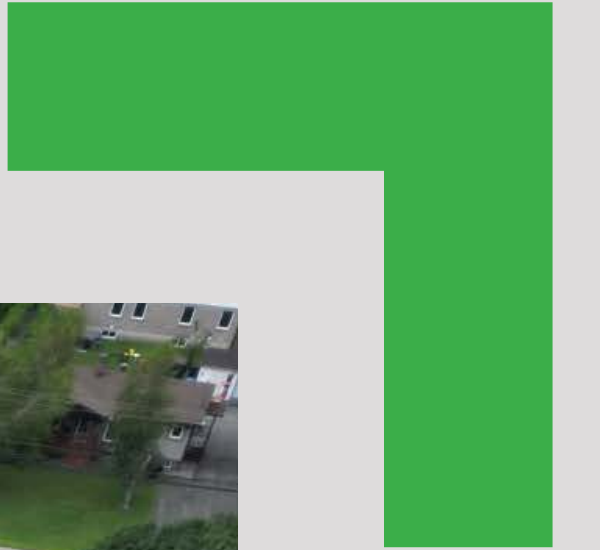


COROPLAST PROJECT



60 000 SQ.FT.





MIGUEL PROJECT



14 000 SQ.FT.

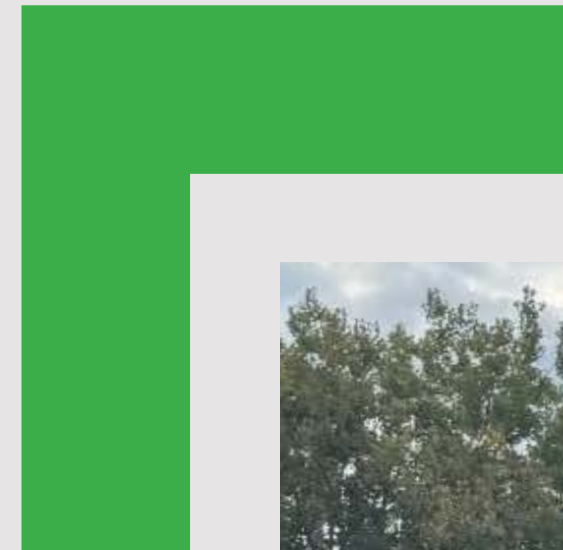


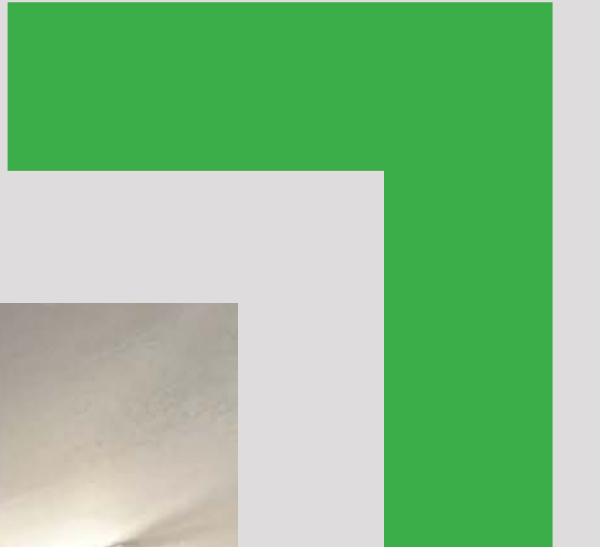
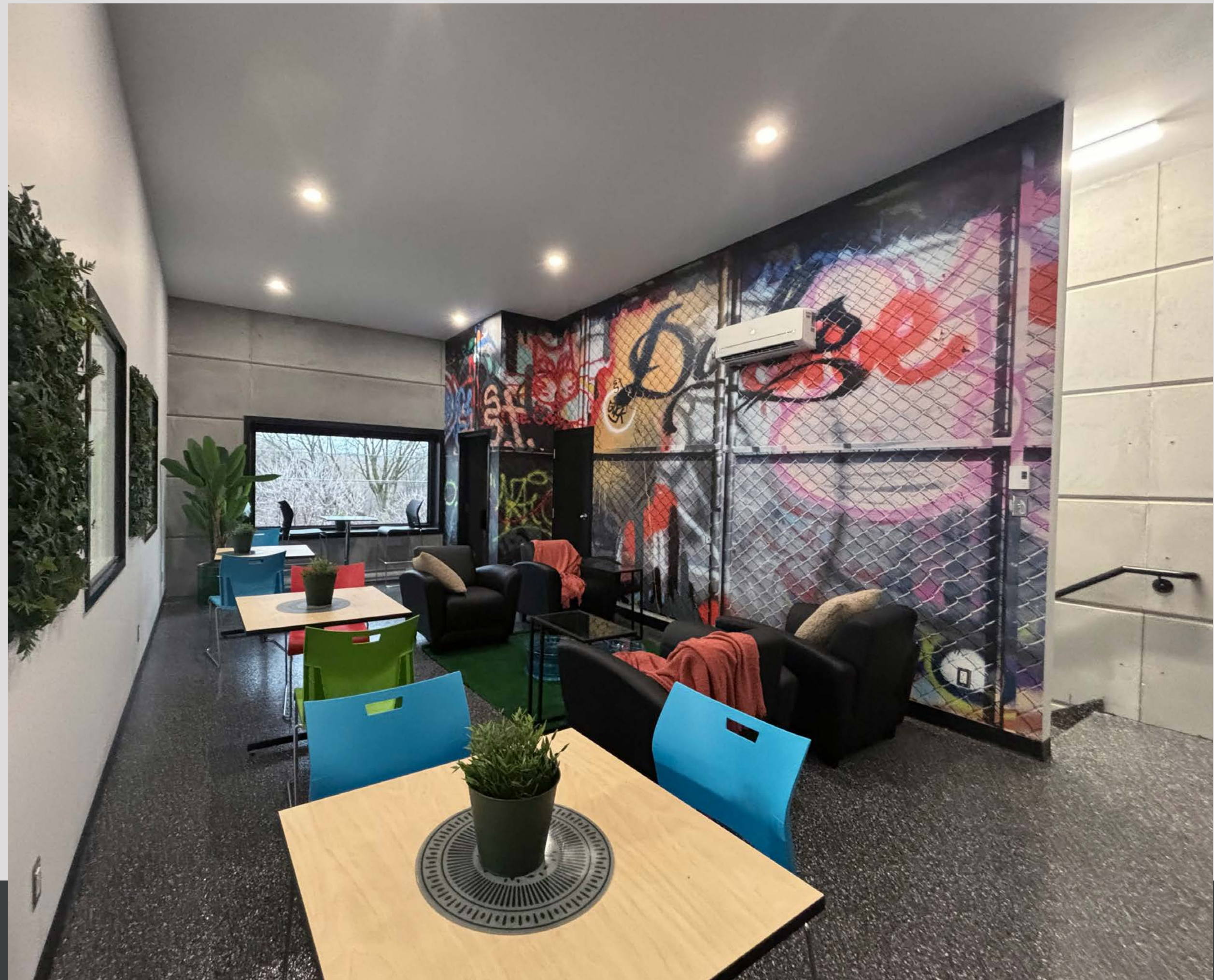


MACPEK PROJECT



6 000 SQ.FT.





BE INNOVATIVE TOO!

THANK YOU

**RAPID
BLOC**

INNOVATIVE ECO ENERGY-EFFICIENT
STRUCTURAL CONCRETE WALL SYSTEM